

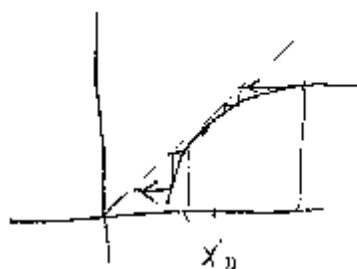
P50

5.



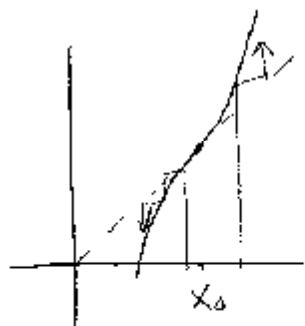
weakly attracting on left
weakly repelling on right
Neither

6.



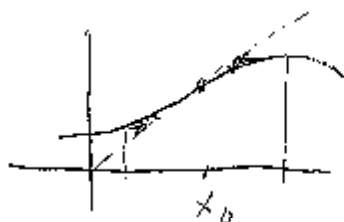
weakly repelling on left
weakly attracting on right
Neither

7.



Point of inflection
weakly repelling

8.



weakly attracting

9. If F has a neutral fixed point at x_0 with $F'(x_0) = 1$ then if $F''(x_0) \neq 0$ then x_0 is neither weakly attracting nor repelling. However if $F''(x_0) = 0$ and $F'''(x_0) > 0$ it is weakly repelling. If $F'''(x_0) < 0$ it is weakly attracting.